

# Services for Homeless People

A directory of services for people in Calderdale



2012 edition

# **Calderdale Homeless Forum**

## **Acknowledgements**

### **2012 Directory**

Suggested amendments and additions to this directory should be emailed to:

[shirley.dyer@calderdale.co.uk](mailto:shirley.dyer@calderdale.co.uk)

Calderdale Homeless Forum would like to thank everyone who contributed information about their services to this directory and would especially like to thank Shirley Dyer who collected, checked and collated all the information supplied and investigated the services available outside Calderdale.

# Contents

<b>Using the Directory.....</b>	<b>4</b>
<b>Responding to Emergency Cases of Homelessness.....</b>	<b>4</b>
The Housing Options Service .....	4
Emergency Duty Team .....	5
Direct Access Accommodation .....	5
Making a Referral .....	5
Emergency Response Flow.....	6
<b>Quick Reference list of Short and Medium Term Accommodation in Calderdale.....</b>	<b>6</b>
<b>Long Term Housing Association Accommodation in Calderdale .....</b>	<b>9</b>
Tenancy Support.....	
<b>General Housing Advice .....</b>	<b>13</b>
<b>Accommodation, Advice and Support For .....</b>	
General Housing Advice	
Young People .....	155
Ex- Offenders.....	19
Women.....	20
People Misusing Alcohol and Substance .....	23
Asylum Seekers.....	26
Ex-Service Personnel .....	29
Gypsies/ Travellers .....	31
<b>Money .....</b>	<b>33</b>
Money from Charitable Funds.....	33
Money from Statutory Sources .....	36
<b>Furniture, Household Goods and Food .....</b>	<b>37</b>
<b>General Advice Agencies .....</b>	<b>39</b>
General Advice .....	39
Health Advice.....	40
<b>Direct Access Hostels Outside of Calderdale .....</b>	<b>46</b>
Leeds .....	46
Rochdale .....	48
Huddersfield .....	48
Bradford /Keighley .....	49
Day Shelters.....	53
<b>Last Resort Options .....</b>	<b>54</b>
<b>Useful websites.....</b>	<b>55</b>

## Using the Directory

This directory is a resource to assist people in finding appropriate agencies who can advise homeless people. It includes agencies that can help in meeting the immediate needs of homeless and potentially homeless people; these needs include areas such as accommodation, tenancy support, food and legal advice. A person who is homeless may also have other, additional needs not directly related to homelessness, which may require the involvement of agencies outside of the housing sector. A trained housing advice worker will be able to refer clients on to other agencies.

## Responding to Emergency Cases of Homelessness

### The Housing Options Service based at Doorways

The Housing Options Service is the agency that should be contacted first regarding any client that is homeless or threatened with homelessness; only Housing Options Service staff are qualified to make decisions as to whether a person is 'statutorily homeless.' A person who has not contacted the Housing Options Service for an assessment may find it more difficult to gain assistance from other housing agencies.

Calderdale Housing Options Service  
Doorways  
18-20 The Square  
Woolshops  
Halifax  
HX1 1RJ

Referral: By agency or self-referral.

Phone: 01422 392460  
Fax: 01422 392461

The Housing Options Service can give advice over the telephone during office hours, and is also open to clients to attend in person. An appointment system operates at some times during the day.

Opening Times: Monday – Friday 9.00 am – 5.00 pm

## **Responding to Emergency Cases of Homelessness - continued**

### **Emergency Duty Team**

The Emergency Duty Team provides a service that can respond out of hours to emergencies to which Health & Social Care Services has a statutory duty.

Access: By agency or self-referral.

Phone: 0845 1111 137

Available at all times **except** Monday – Friday 9.00 am – 5.00 pm

### **Direct Access Accommodation**

There is no direct access accommodation available within Calderdale. If a client wants to gain direct access to a hostel, they must be prepared to travel outside of Calderdale. There is a list of accommodation outside of Calderdale from page 53.

### **Making a Referral**

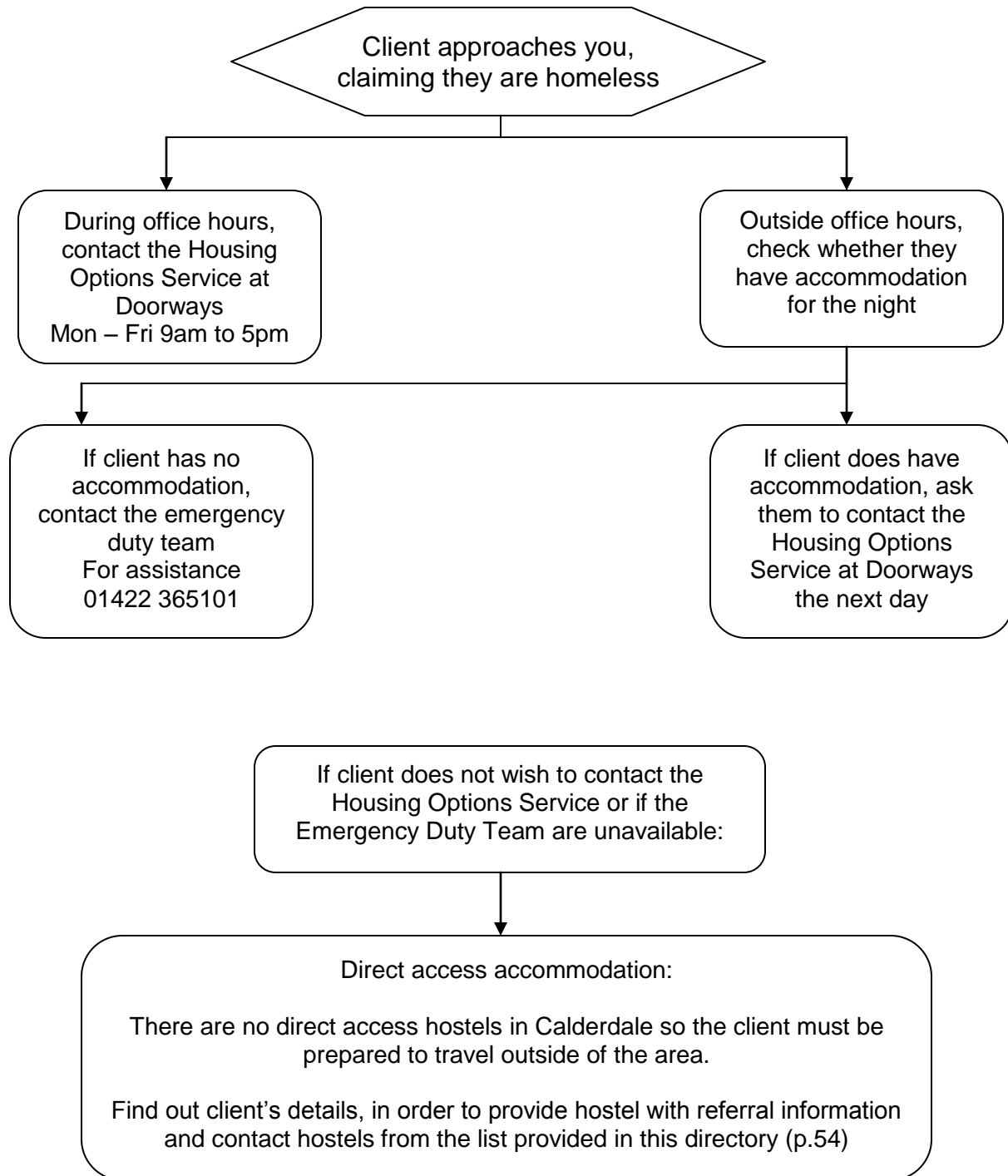
When making a referral to a hostel, ask permission of the individual to pass on information about them.

Information required by hostels:

- 2 forms of ID
- Name and date of birth
- If there is a history of violence or arson
- If there are substance misuse problems
- If there are mental health problems
- How long accommodation is required for (most hostels do not accept short stay).

## Emergency Response Flow

**Figure 1: Emergency Response Flow Chart**



## Quick Reference list of Accommodation Support Providers in Calderdale

Housing support or provider contact	Project detail	Age range	Emergency access to accommodation	Level/ nature of support provided	Referral Process
CMBC Doorways Housing Options Service 01422 392460	Homeless /potentially homeless households?	16 +	Yes – if a duty to provide emergency accommodation is established	Accommodation and housing advice	Self referral or via other agencies
CMBC Doorways Housing Options 01422 392460	Firm Foundations Scheme Help to access Private Landlords for clients of substance – misuse services	16 +	No	Bond Loan and floating support.  Help to identify a private rented tenancy.	Via Probation. DIP , SMS, Basement Project
CMBC Housing Young Person's FOYER 01422 264319	8 places (inc possible 2 parent child places) plus 2 dispersed places.	16 +	No	Accommodation Holistic support / training etc	Self referral or via other agencies
Stonham 01422 395338	Supported Lodgings (20places) Accommodation in a provider's home.	16-25	No	Supported accommodation  Support with basic life skills.	Self referral or via other agencies
Horton Housing and Basement Project <b>conn3ct</b> 01422 306840	Social Rehabilitation Service. Providing housing support, education/training/employment guidance and recovery aftercare.  (Tier 3/4 leaving rehab/treatment programme)	18+	No	Floating support appointments and drop in.	Self referral or via other agencies

<b>Housing / Support provider contact details</b>	<b>Project detail</b>	<b>Age range</b>	<b>Emergency access</b>	<b>Level/ nature of support provided</b>	<b>Referral Procedure</b>
Foundation Prevention and Young People's Service 01422 386910	Prevention of Homelessness Tenancy floating support (80 places)	16– 19	No	Prevention Project Pre tenancy and floating support. Basic Life skills	Agency or Self Referral
Foundation Adult Offender Scheme 01422 386910	Floating support ( 60 places)	18 +	No	Pre tenancy and floating support. Basic Life skills	Probation and YOT
Calderdale Smartmove 01422 361515	Homelessness Floating Support, ((50 places)	18+	No	Various levels of support on offer	Agency & self referral NB Families referral via Doorways
Calderdale Smartmove 01422 361515	Bond Scheme, (61 places) Accredited Life Skills training	18+ Singles & Families	No	Various levels of support on offer	Agency only NB Families referral via Doorways
Horton Housing Private Rented Support Service 01422 392460	Bond Scheme and support (25 places)	18+ singles	No	Bond guarantee scheme with support	Agency referral
Stonham  0845 155 1485	Family Refuges Women at risk of domestic violence (DV) – and their children. NOT boys over 16 years Advice only to males subject to DV		Yes Hostels with shared facilities  including  Asian Women's Refuge	Accommodation and support	Self referral or via other agencies
CAF Co-ordinator Northgate House 01422 393336	Support for professionals in completing the CAF as well as a point of contact to find out if a CAF already exists	0-19	No	Telephone consultation and support in completing the CAF if not done this before.	By telephone



## **Long Term Housing Association Accommodation in Calderdale**

### **Pennine 2000 Housing Offices**

All Pennine Housing 2000 lettings are made via the KeyChoice scheme [www.keychoice.org.uk](http://www.keychoice.org.uk) (NB Jephson Housing Association, Sanctuary Housing Association and Connect lettings are also made via KeyChoice).

#### **Central Halifax Housing Office**

**(Central Halifax, Sowerby Bridge, Hebden Bridge and Todmorden)**

Bull Green House

Bull Green

Halifax

HX1 2EB

Phone: 01422 284500

Fax 01422 284598

Opening Times: Mon-Fri 9-5

Wed 10-5

[www.tph.org.uk](http://www.tph.org.uk)

#### **KeyChoice (Choice Based Letting Scheme)**

Address as above

Tel 01422 285155

Manager Jonathon Howarth

[www.keychoice.org.uk](http://www.keychoice.org.uk)

#### **North Halifax Office**

**(Illingworth, Mixenden and Ovenden)**

87 Turner Ave

South Illingworth

Halifax

HX2 8EF

Phone 01422 255400

Fax 01422 243729

Opening times: Mon-Fri 9-5

Thurs 10-5

## **Pennine 2000 Housing Offices - continued**

### **Lower Valley Office (Elland, Rastrick and Brighouse)**

1<sup>st</sup> Floor Park View House  
Woodvale Office Park  
Brighouse  
HD6 4AB  
Phone 01484 824300

Opening Times: Mon-Fri 9-5  
Wed 10-5

## **Other Housing Associations**

### **Accent Housing Association**

Jeremy Downs House  
Senior way  
Bradford  
BD5 0QB  
Phone: 0845 6780562  
Fax: 01274 736260

Opening Times: Monday- Thursday 9.00 am – 5.15 pm  
Friday 10.00 am – 5.00 pm

### **Connect Housing Association**

5<sup>th</sup> Floor  
Media Centre  
6 Friendly Street  
Huddersfield  
HD1 1RD  
Phone 01484 353535

## **Other Housing Associations - continued**

### **Jephson Housing Association –**

**Lettings via** [www.keychoice.org.uk](http://www.keychoice.org.uk)

Jephson House  
Lowfields Business Park  
Old Power Way  
Elland  
HX5 9DE

Phone: 01422 373855

Fax: 01422 373858

Opening Times: Monday – Friday 9.00 am – 5.00 pm

### **Home Housing Association**

Trinity Royd  
2 Balmoral Place  
Halifax  
HX1 2BG

Phone: 01422 323503

Fax: 01422 323504

Opening Times: Monday – Friday 9.00 am – 5.00 pm

### **Places for People Housing Association**

Stanley House  
The Boulevard  
Clarence Dock  
Leeds  
LS10 1PZ

Phone: 0800 432002

## **Other Housing Associations - continued**

### **Sanctuary Housing Association**

Lettings via [www.keychoice.org.uk](http://www.keychoice.org.uk)

Unit 15  
Killingbeck Drive  
Leeds  
LS14 6UF

Phone: 0800 7810401

Opening Times: Monday – Friday 9.00 am – 5.00 pm  
(Closed between 10.00 am and 11.00 am on Wednesday)

### **Yorkshire Metropolitan Housing Association**

Parkside House  
Somerset Road  
Huddersfield  
HD5 9AU

Phone: 01484 431666

### **St. Vincents Housing Association**

1st Floor,  
Metropolitan House,  
20 Brindley Road,  
Old Trafford,  
Manchester,  
M16 9HQ.

Phone: 0845 6066565 / 0161 772 2121

## General Housing Advice



### Services

The Housing Options Service based at Doorways can advise clients on all housing issues, such as homelessness, tenancy rights, housing benefit, landlord / tenant disputes, illegal evictions, harassment, repairs, rent arrears and mortgage problems. The Housing Options Service has strong links with providers of supported housing in Calderdale, and is able to provide expert advice on which agency will best meet the needs of a homeless or potentially homeless person.



Doorways  
18/20 The Square  
Woolshops  
Halifax HX1 1RJ  
Phone: 01422 392460  
Fax: 01422 392461

### Opening Times:

Drop –in –Monday, Wednesday, and Friday mornings only 10am -12.30pm  
Appointments: - Monday – Friday 1.30 -4pm

## **General Housing Advice –continued**

### **Calderdale Smartmove**

9 Portland Place

Halifax, HX1 2JQ

Phone: 01422 361515

Fax: 01422 361310

Opening Times: Monday 2 – 4.30

Wed 10 – 12.30

Fri 10 – 12.30

### **Services**

For homeless or potentially homeless single people and families over the age of 18

Bond scheme – Support for 9 – 15 months

Generic Scheme - Support for 9 – 12 months

Accredited life skills training

Volunteer development

NB Families referral via Doorways only

### **SHELTERLINE**

Freephone 0808 800 4444

Available 8am -8pm Monday – Friday and 8am – 5pm Saturday

[www.shelter.org.uk](http://www.shelter.org.uk)

## Young People

### **Stonham Supported Lodgings**

Trinity Royd  
2 Balmoral Place  
Halifax  
HX1 2BG  
Tel: 01422 395338  
Opening Times: Monday – Friday 9.00 am – 5.00 pm

#### **Services**

Supported lodgings (16 -25 years)  
Life skills.

### **Foundation Prevention and Support Young People's Services**

21 Bull Green  
Halifax  
HX1 2RZ  
Tel: 01422 386910

Young People aged 16 – 19years at risk of homelessness  
Prevention of Homelessness Services  
Pre tenancy and tenancy support & life skills

### **Action for Children - Calderdale Leaving Care Team**

2/3 Savile Row  
Savile Park Road  
Halifax  
HX1 2EJ  
Tel: 01422 359907

Opening Times: Drop in Thursday 12.00 noon – 2.00 pm; by appointment only at other times.

#### **Services**

For Young people who have been in foster care or Local Authority residential care for at least 13 weeks including at least 1 day after their 16<sup>th</sup> birthday  
Supported lodgings.  
Advocacy work and advice including housing advice

## Young People – continued

### Calderdale Foyer

Ryburn House  
Clay Street  
Pellon  
Halifax  
HX1 4SG  
Tel 01422 264319

#### Services

For young people aged 16 – 24 years  
Staffed self contained accommodation  
Satellite places  
Life skills  
Education and training opportunities

### YouthWorks

Youthworks  
YMCA  
HX1 1UG  
Phone: 01422 320033  
Fax: 01422 320049

Opening Times: 10.00 am – 9.30 pm

#### Services

For young people between the ages of 11 and 25, particularly the 13 – 19 years age group.

Services: Advocacy and advice, including housing advice, is given by Youth Workers both in the office and in the community. A drop in centre is open at Youth Works from Monday to Friday 3.30pm – 5.45pm. Young people can also call at the office from 10am each weekday for support.



## Young People – continued

### **The Information Shop for Young People**

Halifax Connexions Centre  
16 Alexandra Street  
Halifax HX1 1BS

Tel 01422 330033

Opening Times: Monday - Friday 12.00 noon – 5.00 pm

#### **Services**

For young People aged 13 – 25. Staff will also support people close to this age range if necessary.

Information, advice, and support are provided on any subject that young people present to staff; this includes issues of housing and homelessness.

### **Halifax Connexions Centre**

16 Alexandra Street  
Halifax HX1 1BS

Tel 01422 342106

[www.workabout.org.uk](http://www.workabout.org.uk)

Opening Times: Monday - Friday 10.00 noon – 5.00 pm

#### **Services**

For young people age 13 -19.

Specialise in information, advice and guidance in relation to employment, education and training but also give general advice about housing and benefits.

Refer all 16/17 year old young people to the Job Centre in order to claim Job Seekers Allowance or Income Support.

Signpost to other specialist agencies as appropriate, depending on need.

### **Children's Care Services**

Initial Response Team – contact 01422 353279

Emergency Duty Team 0845 1111 137

## Young People – continued

### **Calderdale Youth Offending Team**

Hoover Building  
21 West Parade  
Halifax HX1 2TE

Tel 01422 368279  
[www.calderdaleyot.org.uk](http://www.calderdaleyot.org.uk)

#### **Services**

A wide range of multi agency workers providing support and advice to children and young people at risk of offending or involved with the Criminal Justice System.

Includes Early Intervention Support (EIS) for 8 – 18 year olds.

### **GALYIC (Gay and Lesbian Youth in Calderdale)**

PO Box 8  
Todmorden  
Lancashire  
OL14 5TZ

Contact 01706 817235  
Email [getintouch@galyic.org.uk](mailto:getintouch@galyic.org.uk)  
Sms 07765 361590

#### **Services**

GALYIC provides information, support and advice for lesbian, gay, bisexual and transgender (LGBT) young people and their families across Calderdale.

### **NSPCC Child Protection Helpline**

Phone: 0808 800 5000 (Can advise on homelessness issues)

### **Childline**

0800 1111 (Free phone number). Can advise on any problem, including runaways and homelessness)

## Ex Offenders

### Foundation–Adult Offender Scheme

21 Bull Green

Halifax

HX1 2RZ

Phone: 01422 386910

Fax: 01422 386989

Opening times: Monday, Tuesday, Thursday 9.00 am – 4.30 pm

Wednesday 1.00 pm – 4.30 pm

Friday 9.00 am – 4.00 pm

#### Services

For adults aged 18 + - offenders who are roofless, homeless, potentially homeless or living in inappropriate accommodation

Pre tenancy and tenancy support

Life skills

### Calderdale Youth Offending Team

Hoover Building

21 West Parade

Halifax HX1 2TE

Tel 01422 368279

[www.calderdaleyot.org.uk](http://www.calderdaleyot.org.uk)

#### Services

A wide range of multi agency representatives providing support and advice to children and young people at risk of offending or involved with the Criminal Justice System.

### Probation Service

The Probation Centre

Spring Hall Lane

Halifax

HX1 4JG

Phone: 01422 340211

Fax: 01422 320998

#### Services

Advice for Ex Offenders, including housing advice. Further information on housing is available online at: [www.westyorksprobation.org.uk/pbha/release.htm](http://www.westyorksprobation.org.uk/pbha/release.htm)

## Women

### **Stonham Women's Refuge**

P.O. Box 66  
Halifax  
HX1 2LD

Tel: 01422 351498

Opening times: Mon – Fri 10.00 am – 5.00 pm  
Telephone contact for emergencies is available 24 hours.

#### **Services**

The refuge provides accommodation for women who are experiencing physical, mental, sexual or emotional abuse involving a partner, ex-partner, or family member. The hostel also accommodates children, but not boys over 16.

Accommodation: A hostel with shared facilities. Child care services are provided. Advice can be given on long term rehousing options

### **Stonham AASRA – Asian Women's Refuge**

P.O. Box 68  
Brighouse  
HD6 3YU

Tel: 01484 400479

Opening times: Mon – Fri 10.00 am – 5.00 pm  
Telephone contact for emergencies is available 24 hours.

#### **Services**

The refuge provides accommodation for Asian women who are experiencing physical, mental, sexual or emotional abuse involving a partner, ex-partner or family member. The hostel also accommodates children, but not boys over 16.

Accommodation: A hostel with shared facilities. Child care services are provided. Advice can be given on long term rehousing options.

Work related to honour based violence or forced marriage

## **Women –continued**

### **Calderdale Women' s Centre**

23 Silver Street

Halifax

HX1 1JN

Phone: 01422 386500

#### **DROP –IN Programme**

##### **Monday**

10am -12 coffee morning

1pm – 3pm midwife drop in

3pm – 5pm Domestic Violence young girls drop –in for 11 -19 years age group

##### **Tuesday**

10am -11.30am Mental health drop –in with Diane Sykes

12.30 -1.30pm Housing Advice with Nicola Kyser –BY APPOINTMENT ONLY

##### **Thursday**

10am -12 noon EVOLVE Group – for females involved in the criminal justice system

12.30 -2.30pm Women's advice drop –in with Heather

12.30 -2.30pm Credit Union - BY APPOINTMENT ONLY

##### **Friday**

12.30 -2.30pm Asylum seekers drop –in partnership with VAC & St. Augustine's.

Clients: All women.

#### **Services:**

Drop in sessions where staff can offer advice and information. Staff can arrange for women to attend a free legal clinic, and arrange for women to receive housing advice.

Self help and support groups, including a Domestic Violence support group.

Counselling service - this provides free long and short term counselling.

Education and leisure,

Domestic Violence Project, which offers support, legal advice, counselling and housing advice.

## **Women –continued**

### **Calderdale Women' s Centre Domestic Violence Support Team**

Phone: 01422 323339

Opening times: Monday – Thursday 9.00 am – 5.00 pm

#### **Services**

For women aged 16 and above who have been subjected to domestic violence. Domestic violence can be physical, sexual, psychological or emotional. A woman does not have to be separated from her partner in order to receive help.

Support groups, individual support including visits to outside of Halifax, advocacy and telephone support. Women can bring their children with them. Support is also available for women whose partners are attending a programme at the probation office.

### **Police – Main Switchboard 0845 6060606**

IN AN EMERGENCY PHONE THE POLICE ON 999.

### **Women's Aid**

Phone: 0845 702 3468

Website: [www.womensaid.org.uk](http://www.womensaid.org.uk)

Help for women and children suffering domestic violence.

## People Misusing Alcohol and Substance

### Horton Housing Workwise and The Basement Project

#### Conn3ct

Princess Court,  
36 Gibbet Street,  
Halifax,  
HX1 5BA

Phone 01422 306840

Opening times Monday to Friday 9am – 5pm

Conn3ct is a Social Rehabilitation Service for Tier 4 substance misusers (leaving rehabilitation or on a treatment programme) who have housing related problems and / or want support to access education / training / employment and / or want to engage in therapeutic aftercare.

Housing and tenancy support  
Education, Training and Employment  
Treatment After Care

#### Outlook

11 Ward's End  
Halifax  
HX1 1BX

Phone: 01422 510000

Fax: 01422 510009

Opening Times: Monday – Friday 10 am – 4.30- pm

#### Services

People who are 18 years or older, and have a substance misuse problem or have had a recent substance misuse problem.

Outlook offers daily support including housing advice, a programme of activities (including help into work or education, sport and fitness, and computer and internet training), individual support, childcare whilst using the service, personal development skills and information on local resources.

## **People Misusing Alcohol and Substance – continued**

### **Branching Out Lifeline, Calderdale Young Person's Service**

9 Ferguson Street  
Halifax  
HX1 2EE

Opening Times: Monday – Friday 9.30 am – 5.00 pm

Phone: 01422 51000  
Fax: 01422 ??????????

#### **Services**

For young people under the age of 21 who want information about drugs and alcohol, or want to stop using or reduce their use of drugs. Support can also be given to parents/carers.

Lifeline offers support, advice and information, access to doctors and help accessing careers and sports.

### **Firm Foundations**

Doorways  
18/20 The Square  
Woolshops  
Halifax HX1 1RJ

Contact 01422

#### **Services**

Help to access Private Landlords for substance –misusers 16 years +  
Bond Loan and floating support.  
Help to identify a private rented tenancy



## **People Misusing Alcohol and Substance – continued**

### **The Basement Project**

The Basement,  
Halifax YMCA,  
Marlborough Hall,  
Crossley Street,  
Halifax, HX1 1UG

(01422) 383063 (lines open 9am - 5pm, Monday to Friday)

Basement Recovery Programme, Freedom House, Volunteer and Self help  
Breakfast Club and Drop in - each Tuesday & Thursday 10am -12noon

### **Alcoholics Anonymous**

Phone: 0845 769 7555

Website: [www.alcoholics-anonymous.org.uk](http://www.alcoholics-anonymous.org.uk)

AA can advise on issues around alcohol, and put people in contact with a local group.

### **National Drugs Helpline**

Phone: 0800 77 66 000 (open 24/7)

Website: [www.talktofrank.com](http://www.talktofrank.com)

## Asylum Seekers

### St Augustine's

Hanson Lane  
Halifax HX1 5PG  
01422 342719

#### Services

General support, including basic immigration support, support on accessing benefits, housing and education and employment upon receiving a positive decision.

### Refugee Council Yorkshire and Humberside

Ground Floor  
Hurley House1 Dewsbury Road  
Leeds  
LS11 5DQ  
Phone: 0113 244 9404  
Fax: 0113 246 5229

Opening Times: Advice Line open Monday, Tuesday, Thursday and Friday 10 am - 12.00 noon and 2.00pm - 4.00pm  
Phone: 0113 386 2210

#### Services

For Asylum seekers, often destitute individuals.  
Assistance with applications for subsistence support and accommodation, which is provided by the National Asylum Support Service.

### Refugee Council

Head Office  
3 Bondway  
London  
SW8 1SJ

#### Services

The Refugee council has a list of local day centres, soup kitchens, and night centres that can assist refugees, and this list can be obtained from:

**Refugee Council Yorkshire and Humberside: 0113 244 9404.**

Phone: 020 7820 3000

Website: [www.refugeecouncil.org.uk](http://www.refugeecouncil.org.uk)

Email: [info@refugeecouncil.org.uk](mailto:info@refugeecouncil.org.uk)

## **Asylum Seekers -continued**

### **National Asylum Support Service**

5<sup>th</sup> Floor

Quest House

11 Cross Road

Croydon

CR9 8EL

Phone: 0845 602 1739

[www.ind.homeoffice.gov.uk](http://www.ind.homeoffice.gov.uk)

### **Services**

Accommodation and subsistence for asylum seekers

### **Asylum applicants dispersed to Calderdale**

The Local Authority Asylum Support Team provides support and accommodation to asylum seekers who have been dispersed to Calderdale by the National Asylum Support Service. Social Services also provide support and accommodation for disabled asylum seekers and unaccompanied asylum seeking children. There are also private providers of housing – the main one being: - United Property Management (UPM).

123 Collyhurst Road

Collyhurst

Manchester

M40 7RT

Telephone 0161 202 0201

### **Calderdale MBC Social Care Services**

Northgate House

PO Box 33

Northgate

Halifax

HX1 1UN

Phone: 01422 393377

Fax: 01422 393306

Opening Times: Mon-Thurs 9am- 5pm

Friday 9am-4.30pm

## **Asylum Seekers –continued**

### **Housing for applicants who have received a positive decision**

People with refugee status, exceptional leave to remain, humanitarian protection, or discretionary leave should contact the Doorways Housing Options Service on 01422 392463

### **Useful Website**

[www.migrationyorkshire.org.uk](http://www.migrationyorkshire.org.uk)

## **Ex-Service Personnel**

### **Spaces (Single Persons Accommodation Centre for the Ex Services) - Catterick**

Phone: 01748 833 797 or 872940

Fax: 01748 835 774

#### **Services**

Spaces is an accommodation placement centre designed specifically to provide help to single Service leavers seeking appropriate civilian housing.

### **Joint Service Housing Advice Office (JSHAO)**

Phone: 01722 436575

Fax: 01722 436577

#### **Services**

The JSHAO provides housing advice, and in some cases helps place Service Personnel in suitable civilian accommodation. JSHAO gives details of individual Local Authority policies towards housing regulars, housing associations, and special schemes or contacts which could generate housing options not previously considered.

### **SSAFA Forces Help (Soldiers, Sailors, Airmen and Families Association – Forces Help)**

19 Queen Elizabeth St.

London

SE

Phone: 0845 1300 975

Opening Times: Monday – Friday 9.15am to 5.00pm

#### **Services**

SSAFA forces help has a specialist Housing Advisory Service that provides information on a wide range of housing matters.

## **Ex-Service Personnel - continued**

### **SSAFA Forces Help**

Carlton Barracks

Carlton Gate

Leeds

LS7 1HE

Phone: 0113 2449254

#### **Services**

Application for welfare grants for rental deposits, furniture, white goods and furniture, may be made through the local branch network.

### **Royal British Legion**

199 Borough High Street

London SE1 1AA

Phone: 08457 725725

#### **Services**

Provides advice on housing, welfare grants and general advice on the support available to ex- Service Personnel and their dependents.

## **Gypsies/ Travellers**

The local authority is not obliged to provide sites for travellers, and Calderdale does not have an official traveller site. A small number of travellers do pass through Calderdale, mainly fairground/circus families, some of whom speak Russian as a first language. Travellers living in a caravan or house boat who become homeless due to not having permission to park or moor should contact the Housing Options Service based at Doorways – 01422 392460

### **Traveller Advice Team**

Ruskin Chambers  
191 Corporation Street  
Birmingham  
B4 6RP  
Contact 0121 6858677

Phone: 0845 120 2980

Opening Times: Monday – Friday 9.00 am – 8.00 pm

### **Services**

Legal advice covering debt, housing, family, welfare, employment and education

### **Friends, Families, and Travellers**

Community Base  
113 Queen's Road  
Brighton  
BN1 3XG

Phone 01273 234 777

Fax 01273 234 778

Email [fft@gypsy-traveller.org](mailto:fft@gypsy-traveller.org)

Emergency line: 07971 550 328

Website [www.gypsy-traveller.org](http://www.gypsy-traveller.org)

### **Services**

Advice & advocacy is available on housing, sites, accommodation, and eviction for individuals, families and communities.

## **Gypsies/ Travellers - continued**

### **The Gypsy Council**

Website: [www.gypsy-traveller.org](http://www.gypsy-traveller.org)

#### **Services**

Offers an advice service to gypsy people.

### **Travellers Aid Trust**

PO Box 16

Llangyndern

Kidwelly

SA17 5YT

Contact – 01269 870621

Email: [info@travellersaidtrust.org](mailto:info@travellersaidtrust.org)

Website [www.tavellersaidtrust.org](http://www.tavellersaidtrust.org)

#### **Services**

Offers small grants to travelers.

### **Leeds GATE (Gypsy & Travellers Exchange)**

Website [www.grtleeds.co.uk](http://www.grtleeds.co.uk)

#### **Services**

A mass of info for gypsies and travellers



## Money

### Money from Charitable Funds

#### Calderdale Community Foundation Fund for Individuals

Grants Team  
Community Foundation for Calderdale  
162a Kings Cross Road  
Halifax  
HX1 3LN

Phone / Fax: 01422 438738 or e mail [grants@cffc.co.uk](mailto:grants@cffc.co.uk)

#### Services

Individuals in need of emergency funding. Provides grants of up to £130 for a variety of items including food and clothes.

NB – no self referral – referrals must be via agencies.

#### Family Action

501 Kingsland Road  
London  
E8

Phone: 020 7254 6251

Fax: 020 7249 5443

Website: [www.family-action.org.uk](http://www.family-action.org.uk)

Opening Times: Monday -Friday 9 – 5pm

#### Services

Family Action charity has been a leading provider of services to disadvantaged and socially isolated families since its foundation in 1869. We work with over 45,000 families a year by providing practical, emotional and financial support through over 100 services based in communities across England. A further 150,000 people benefit from our educational grants and information service. We tackle some of the most complex and difficult issues facing families today – including domestic abuse, mental health problems, learning disabilities and severe financial hardship.

## Money from Charitable Funds - continued

### Groundswell Project

Groundswell UK  
1<sup>st</sup> floor Lesley Court  
23 -33 Strutton Ground  
SW1 P2HZ  
Phone: 020 7976 0111  
Fax: 0207 2333 674  
Website: [www.groundswell.org.uk/about/index.htm](http://www.groundswell.org.uk/about/index.htm)

#### Services

For groups which involve homeless people.  
Grants of up to £700 for projects started up by groups which involve or are comprised of homeless people.

### Brighouse War Memorial Nurses Endowment Fund

Democratic and partnership services  
c/o 2<sup>nd</sup> Floor  
Westgate House  
Halifax

Phone: 01422 393013

#### Services

For anyone on a low income who is in need, and lives in the former borough of Brighouse.  
Grants of up to £150 to ease hardship. Items considered include clothing, cookers, funeral expenses and vet's bills.

### Bearder Charity

3 & 5 King Street  
Brighouse  
HD6 1NX

Telephone 01484 710571

#### Services

For anyone in need in Calderdale.  
Small awards- Past awards have been made for household goods.

## Money from Charitable Funds- continued

### **The Frank Buttle Trust**

The Frank Buttle Trust  
Audley House  
13 Palace Street  
London  
SW1E 5HX

Telephone 020 7828 7311

Fax 0207 8284724

[info@buttletrust.org](mailto:info@buttletrust.org)

### **Eligibility**

Aged 20 years or younger, and resident or ordinarily resident and living in the UK, living in difficult circumstances, in financial need, or in a situation where there is no statutory responsibility for meeting needs.

### **The Princes Trust**

The Princes Trust Yorkshire & Humber  
First Floor (South Wing)  
Wade House  
The Merrion centre  
Leeds  
LS2 8NG

Telephone 0113 2368395

Website [www.princes-trust.org.uk](http://www.princes-trust.org.uk)

Various programmes to enable young people to get back into education, training, employment or volunteering

## Money from Statutory Sources

### **Note: - JSA/ Income Support/ ESA**

**Over 18s** – Have to claim via telephone helpline 0800 055 6688

**Under 18s** – go via the connexions centre on 01422 342106.

**Under 18 years Young Persons Benefits Advisor** -01422 424616

### **Benefits Assessment Unit**

Benefits Assessment Unit

PO Box 660

Halifax

HX1 1ZT

Phone: 0845 245 8000 (for enquires relating to Council Tax Benefit, Housing Benefit or Free School Meals). Lines open Monday – Thursday 8.45am -5.30pm, Friday 8.45am -5pm.

Email: [benefits.unit@calderdale.gov.uk](mailto:benefits.unit@calderdale.gov.uk)

### **Benefits Agency Social Fund**

Phone: 0845 6088567

### **Services**

For people on benefits.

Awards to people in need including homeless people. Claim forms are available at Job Centre Plus. Help from interpreters can be arranged.

### **Crisis Loan**

Contact 0800 0328347

### **Job Centres**

Halifax Job centre

19 Horton Street

Halifax

HX1 1QE

Todmorden Job Centre

27-31 Adelaide St.

Todmorden

OL14 5HT

Brighouse Job Centre

Owler Ings Rd.

Brighouse

HD6 1ER

## **Furniture, Household Goods and Food**

### **CHAS Furniture Scheme**

Saint Patrick's Centre  
Sedgefield Terrace  
Bradford

Phone: 01274 731909

#### **Services**

Furniture starter packs and household goods at low cost

### **Project Colt**

5 St James St  
Halifax HX1 5SU  
Contact Malcolm Stockings 07928 343367  
Reg.Charity helping substance misusers

Charity shop and 2<sup>nd</sup> hand household goods at low cost

### **The Basement Project**

YMCA  
Crossley Street  
Halifax  
HX1 1UG  
Contact 01422 383063

Breakfast Club – Tues and Thurs from 10.00-12.30 for free breakfast

Laundry Service  
Volunteer Recruitment  
Recovery Group  
Advice and Signposting

### **Ebenezer Church**

St James Rd  
Halifax  
Tel 07519 631899

#### **Services**

Free Food packs available each Saturday morning to those on benefits who have less than £35 per fortnight to live on after paying bills. Self referral (proof of income /outgoings will be needed) or agency referral.

## **Furniture, Household Goods and Food - continued**

### **Salvation Army**

St James Rd

Halifax

Tel 01422 353238

### **Services**

Free meals each Wednesday 12 – 1.30pm

### **FREECYCLE - website**

[www.uk.freecycle.org](http://www.uk.freecycle.org)

Household Goods on offer at no cost

## General Advice Agencies

### Calderdale Citizens' Advice Bureau

CAB Advice Line -01422 842848 for direct advice or details of drop in / provision across Calderdale.

**Visit: -**

[www.calderdalecab.org.uk](http://www.calderdalecab.org.uk)

[www.adviceguide.org.uk](http://www.adviceguide.org.uk)

**Services:** The CAB offers information, advice and assistance in areas such as debt, welfare benefits, housing, consumer issues, immigration, employment, family and personal issues, Council Tax and utilities problems. Housing advice covers areas such as finding accommodation, queries about rent and mortgages, eviction and getting repairs done. It is a free, independent, confidential and impartial service open to all.

Clients: Open to all sections of society. Referral: Open to the public.

### Mixenden Parents' Resource Centre

30 – 34 Stanningley Road

Mixenden

Halifax

HX2 8RJ

Phone: 01422 249343

**Opening Times:**

Monday – Thursday 9am -4pm

Friday 9am -3pm

**Services**

For anyone, not just parents, community education, crèche, advice and support.

### Family First

Northgate House

Halifax

Contact 01422 357357

**Services**

Long term Intensive support for families facing difficulties. Agency referral only

## Health Advice

Anyone with physical or mental health needs who is in need of accommodation should contact the Housing Options Service at Doorways or Social Care Services.

### **NHS Direct**

Phone: 0845 4647

Website: [www.nhsdirect.nhs.uk](http://www.nhsdirect.nhs.uk)

Opening Times: 24 hours.

### **Services**

The helpline gives information on -

- What to do if someone is feeling ill.
- Particular health conditions.
- Local Services, such as doctors, dentists or late night opening pharmacies.
- Self-help and support groups.

### **NHS Calderdale**

Customer Services Team (PALS – Patient Advice and Liaison Service)

Contact 0800 1830912

### **NHS Calderdale -Children & Young Person Service (School Nurses & Health Visitors)**

Contact Diane Catlow, Acting Service Matron 01422 307300

### **NHS Calderdale**

#### **Safeguarding and Looked after Children Services**

Contact 01484 728929 or 728930

### **NHS Calderdale**

#### **Emergency Dentist**

Office hours 0345 6059999

Out of office hours 0845 1220221



## **Health Advice –continued**

### **NHS Calderdale**

**To register with a dentist** (NB must be registered with a GP to do this)

Contact 01422 281576

### **The Calderdale Royal Hospital**

Salterhebble

Halifax

Contact 01422 357171

### **NHS – Walk-in Service (now limited appointments)**

Park Community Practice

Horne Street Health Centre

Hanson Lane

Halifax

Tel: 01422 399858 (no appointment necessary)

Open Mon – Fri 8am – 12noon and 3pm – 7pm

Sat – Sun 8am -6pm

Offers a range of services including health information, advice and treatment for a range of minor illnesses and minor injuries.

### **Todmorden Walk –in –Service**

Todmorden Health Centre

Halifax Rd.

Todmorden

Tel: 01706 811106

Open 8am – 7pm Mon – Fri

8am – 6pm Saturday

Closed Sunday

Offers a range of services including health information, advice and treatment for a range of minor illnesses and minor injuries.

## **Health Advice –continued**

### **Calderdale INSIGHT Early Intervention services**

#### **Services**

The Early Intervention Service works with children and adults aged between 14 and 35 who are experiencing their first episode of psychosis in the hope of identifying and treating symptoms early to promote recovery.

**Contact:** 01422 383062

### **CAMHS – Children and Adolescent Mental Health Service**

Contact 01422 305539

### **Mental Health Trust**

South West Yorks in partnership with NHS Foundation Trust

Customer Services 0800 5872108

### **The Brunswick centre**

The Resource Centre

Hall Street

Halifax

Phone: 01422 341764

Fax: 01422 3418122

Opening Times: Monday- Friday 9.30 am – 5.00 pm. Out of hours by arrangement

#### **Services**

- Support and Advocacy for people with HIV and those directly affected including carers and partners.
- MSM Service – Sexual health promotion and HIV prevention for gay and bisexual men.
- Calderdale condom distribution scheme

## Health Advice –continued

### **MIND – National Services**

Mind provides two confidential mental health information services. With support and understanding, we enable people to make informed choices.

**Contact Mind***info*line 0845 766 0163

[info@mind.org.uk](mailto:info@mind.org.uk)

[Contact Mind](#)*info*line

We are able to provide information on a range of topics including types of mental distress, where to get help, drug and alternative treatments and advocacy. We are able to provide details of help and support for people in their own area.

**Contact Mind's Legal Advice Service on 0845 2259393**

[legal@mind.org.uk](mailto:legal@mind.org.uk)

We provide legal information and advice on mental health related law covering mental health, community care, capacity, discrimination/equality and human rights

### **Saneline**

**Helpline 0845 767 8000 (1.00 p.m. to 11.00 p.m. every day)**

E mail [info@saneline.org.uk](mailto:info@saneline.org.uk)

Website [www.sane.org.uk](http://www.sane.org.uk)

**Services** SANEline is a national out-of-hours telephone helpline offering emotional support and information for people affected by mental health problems.

### **The Samaritans**

Phone: 08457 909090

Website: [www.samaritans.org.uk](http://www.samaritans.org.uk)

**Services** 24 hour listening service – 7 days per week

## **CMBC Health & Social Care**

### **Gateway to Care**

1Park Rd, Halifax HX1 2TU

**Contact 0845 1111103**

E mail [gatewaytocare@calderdale.gov.uk](mailto:gatewaytocare@calderdale.gov.uk)

The way to find out and access social care for adults in Calderdale

**Out of hours emergency number for the whole of  
Calderdale is 0845 1111 137**

## CMBC Customer First Contacts

### Customer First Offices

For enquiries about any Council services contact  
[customer.first@calderdale.gov.uk](mailto:customer.first@calderdale.gov.uk) or call 0845 245 6000.

#### **Todmorden**

Todmorden College  
 Burnley Road  
 Todmorden  
 OL14 7BX

#### Day

Monday – Friday  
 Saturday, Sunday

#### Time

9am – 5pm  
 Closed

#### **Hebden Bridge**

Hebden Bridge Library  
 Cheetham Street  
 Hebden Bridge  
 HX7 8EP

Monday  
 Tuesday  
 Wednesday  
 Thursday  
 Friday  
 Saturday  
 Sunday

10am – 7pm  
 10am – 1pm  
 11am – 3pm  
 10am – 7pm  
 11am – 3pm  
 10.30am – 12.30pm  
 Closed

#### **Brighouse**

Brighouse Civic Hall  
 Bradford Road  
 Brighouse  
 HD6 1RW

Monday – Wednesday  
 Thursday  
 Friday  
 Saturday  
 Sunday

9am – 5pm  
 9am – 6pm  
 9am - 5pm  
 9.30am – 12.30pm  
 Closed

## Direct Access Hostels Outside of Calderdale

### Leeds

Project Address	Clients	Spaces	Criteria
The Hollies Weetwood Lane LEEDS LS16 5NZ  Tel: 0113 214 4594	Women 16 +	31 Bed 1 Shared  wheel chair access	<b>Direct access</b> for Single women fleeing domestic violence who would not be safe in Calderdale.
Carr Beck Leeds Housing Concern 32 Lingwell Grove Middleton LEEDS LS6 3AN  Tel: 0113 271 7295	'wet house' for alcoholic women 25+	Self contained bedsits with 24 hr cover and support.  6 self contained properties in the community.	<b>Not direct access.</b> Professional referrals only.  Clients would be assessed before being admitted onto a waiting list.
Ladybeck House English Churches Housing Group 26 Ladybeck Close LEEDS LS2 7QX  Tel: 0113 245 2893	Women & Men 16 – 65	Shared self contained bedsits for 2 people.  Resettlement Hostel stay expected 4/6 months.	<b>Direct access</b> on the proviso that a referral is sent prior to appt. being made for the client.
Bracken House English Churches Housing Group LEEDS  Tel: 0113 245 8091	Women & Men 16 – 65	Shared self contained bedsits for 2 people.  1 flat for a couple which is adapted for disabilities  Resettlement Hostel stay expected 4/6 months.	<b>Direct access</b> on the proviso that a referral is sent prior to appt. being made for the client.

<p>Leeds Housing Concern Garforth House 118 Domestic Street Holbeck LEEDS LS11 9SG</p> <p>Tel: 0113 244 0910</p>	<p>Men 25 – 65</p>	<p>Hostel type accommodation and shared self-contained accommodation.</p> <p>Work with men who have mental health/substance misuse issues.</p>	<p><b>Not Direct Access</b> – take self referrals and referrals from other agencies.</p>
<p>Touchstone Touchstone House 2-4 Middleton Crescent LEEDS LS11 6JU</p>	<p>Women &amp; Men 16+</p>	<p>Hostel and move on accommodation</p>	<p>Self referral or agencies. Procedure is to request a referral form with a view to an appointment being arrange for an assessment.</p> <p>For people with mental health problems</p>
<p>St Michael's Lane Hostel 9 St Michael's Lane Headingley LEEDS LS6 3AN</p> <p>Tel: 0113 214 4598</p>	<p>Single Women 16+</p>	<p>Hostel type accommodation</p>	<p><b>Direct access</b> for single women fleeing domestic violence.</p>
<p>Batley Foyer 43 Field Lane, Batley WF17 5AG</p> <p>Tel 01924 500765</p> <p>Fax 01924 500764</p>	<p>Men / women 16 – 25 years</p>	<p>Supported accommodation</p>	<p>Planned referral -(waiting list)</p>

## Rochdale

Project Address	Clients	Spaces	Criteria
Salvation Army Hostel Providence House 2 High Street ROCHDALE  Tel: 01706 645151	Men 18+	Hostel type accommodation although 2 rooms are shared.	Direct access accommodation - self referral and referral from agencies.
Walker House Walker Street ROCHDALE OL16 2AB  Tel: 01706 713337	Men & Women 18+	Hostel type accommodation Single and shared rooms.	Direct access accommodation - self referral and referral from agencies.  Will take people with mental health problems, drug/alcohol issues.
Threshold Housing Project 41 Spring St Oldham OL4 2BD  Tel 0161 634 2934 Fax 0161 624 8440	Single men 16 -60 years	Hostel type supported accommodation and move on.	Emergency and Planned access

## Huddersfield

Project Address	Clients	Spaces	Criteria
Horton Housing Association 49-51 Spring Street HUDDERSFIELD HD1 4AZ  Tel: 01484 300744	Men 16+	8 bed hostel + move on accommodation.	Agency/self referrals – <b>not direct access</b> although if there is a vacancy and assessment has been done client can be accommodated quickly.
Wish Project  Tel: 01484 512739	Women 16+ No dependents	Hostel type accommodation	Agency referrals – <b>not direct access</b> although if there is a vacancy and assessment has been done client can be accommodated quickly.  Will consider women with health/substance misuse issues.



## Bradford/Keighley

NB Bradford City Centre Project website updates daily on hostel vacancies in the Bradford area. <http://www.bradfordccp.com/>

Project Address	Clients	Spaces	Access
<p>Agape Project 142 Bradford Road, Idle, Bradford 243 Leeds Road, Idle, Bradford</p> <p>Tel 01274 610893 Fax 01274</p>	<p><i>Special Needs:-</i> drug addiction 18-45 Males only</p>	<p>9 single rooms 2 shared Shared communal areas Meals provided</p>	<p>Self refer or agency referral</p>
<p>Airedale Homes 1 Banks House Chambers, Dacre Banks, Harrogate HG3 4EL</p> <p>Tel 01423 781888 Fax 01423 781575</p>	<p><i>Special Needs:-</i> Mental Health problems only 18 yrs +</p>	<p>Bingley 3 self contained accommodation 5 en suite Keighley/Skipton Single Rooms and shared communal areas</p>	<p>Will take referrals from out of area for anyone with on going mental health problems – however, would then have to clear with the Mental Health Trust in the local area.</p>
<p>Aldo House 5 Wilmer Drive, Bradford BD9 4AR</p> <p>Tel 01274 549409 Fax 01274 549413</p>	<p>16 -25 yrs</p>	<p>Supported Own bedrooms Shared communal areas</p>	<p>(Priority to Bradford Housing Advice)</p>
<p>Assisi Housing Project Ltd 847 Leeds Road Bradford BD3 8BU</p> <p>Tel : 01274 666274</p>	<p>18-65 Single Men</p>	<p>6 Bed Single rooms &amp; ensuite. Disabled access facilities.</p>	<p><b>Not direct access</b> Self-referrals &amp; referrals via agencies. Part-time staff cover 9.00am-6.30pm Mon-Fri &amp; 10.00am-1.30pm Sat/Sun. Practical/emotional support provided.</p>

<b>Project Address</b>	<b>Clients</b>	<b>Spaces</b>	<b>Access</b>
Blenheim Project 14 Oak Lane Bradford BD9  Tel: 01274 495834	16+ Single women & women with children	Self contained flats (some shared)	<b>Direct access</b> Self-referrals & referrals via agencies. 24 hour cover.
Bradford City Centre Project YMCA Building Trinity Road Off Little Horton Lane Bradford BD5 OJ9  Tel: 01274 742576 Freephone 0800 220102	Young People 16-25	8 Single Rooms Shared facilities	<b>Direct Access</b> Self referrals and referrals via agencies
Bradford Cyrenians 255 Manningham Lane Bradford BD8 7EP  01274 481039	21-65 Single Men	12 short stay (24 hour staff cover)  26 long stay	Direct access Self-referrals & referrals via agencies.  Will consider people with drink, drugs, mental health problems.
Bradford Foyer 1 Coate Street, Bradford BD5 7DL  Tel 01274 200500 Fax 01274 403000	Male / female 16 +	Supported accommodation	Planned referral
Fairweather Project PO Box 21 Bradford BD15 7XW  01274 773338	Homeless women with or without children  (No boys 12+)	5 family rooms & 5 single rooms (includes disabled annex)	<b>Direct access</b> Will consider self-referrals but would prefer referrals from agencies

<b>Project Address</b>	<b>Clients</b>	<b>Spaces</b>	<b>Access</b>
Hollinbank House 1 Lavender Croft Heckmondwike WF16 9RX  Tel 01924 404319	Male/Female 16 +	Hostel type supported accommodation	Emergency Access and move on accommodation
Keighley Womens Aid PO Box 46 Keighley BD20 6UA  Tel: 01535 210067/210478	Women and children fleeing domestic violence	Resident has own room but shares kitchen & bathroom	<b>Direct access</b> Self-referrals & referrals via agencies
Keyhouse 71 Richmond St. Keighley BD21 2HH  Tel 01535 680677 Fax 01535 690918	Male/Female 16 +	Hostel type supported accommodation and move on	Emergency Access and move on accommodation
Leigh House 34 Ash Grove Bradford BD7 1BM  01274 410956	Women with mental health problems	5 single bedrooms with shared facilities	Referrals from agencies only.  Emotional & practical support.  No wheelchair access.
Oakvale 37-39 Halifax Road, Keighley BD21 5ES  Tel 01535 608514 Fax 01535 608544	18-65	?	?
Horton Housing Association Saint Pauls Road Hostel 33-35 St Pauls Road, Bradford BD8 7LP	18+ Male	13 units plus 38 dispersed unit.	Not direct access but assessments can be done very quickly if a space is available. Self-referrals & referrals via other agencies.

Tel /Fax 01274 547017			
Salvation Army 371 Leeds Road Bradford BD3 9NG  Tel: 01274 773517	Men 18 – 65	Single rooms	<b>Direct access</b> Self-referrals & referrals via agencies
The Lighthouse Group Bradford?  Tel 01274 570232	Male / female 16 +	Hostel type supported accommodation	Planned referral
Horton Housing Association Three Saints Hostel 43 Blenheim Road, Bradford BD8 7LH Tel /Fax 01274 484540	<b>Special Needs:-</b> Mental health problems. 18+ Male and Female	19 units	Not direct access but assessments can be done very quickly if a space is available.  Self-referrals & referrals via other agencies.
Horton Housing Association New Cross St	Hostel for men with alcohol problems  18+	Single rooms	Not direct access but assessments can be done very quickly if a space is available. Self-referrals & referrals via other agencies
Horton Housing Association MAPPS House	Teenaged girls who are pregnant or have children  16+	Self contained flats	Not direct access but assessments can be done very quickly if a space is available. Self-referrals & referrals via other agencies

**DAY SHELTERS**

<b>Name &amp; Address</b>	<b>Tel No &amp; Fax No</b>	<b>Opening hours</b>	<b>Services</b>
Bradford Day Shelter  16-20 Edmund Street, Bradford BD5 0BH	T 01274 393234  F 01274 320771	Sun 9.30 open, Mon 9.30-4.00, Tues 9-4, Weds 9.30-3.30, Thurs 9-4,	Food – 70p per meal, 5 free meal tickets to start off. Bath, clothes, laundry. Help to find accommodation.
City Centre Project	T 01274 742576		
St George's Crypt  Great George Street, Leeds LS1 3BR	T 0113 245 9061  F 0113 244 3646	Homeless 6 pm.  Put name down for bed space but no guarantee.	Food 6-9 pm. Shower. Refer to other agencies. Every Weds a Health Bus turns up for health requirements and needs. Clothing store open Mon 10-11 .am.

## Last Resort Options

If a person is unable to secure any accommodation through the agencies listed, and has nowhere to sleep for the night, they may wish to consider the following options:

- Sleeping on a friend's/relative's floor. If the friend or relative is trustworthy, staying with them could be a temporary measure until the individual is able find somewhere more appropriate through a housing agency.
- Bed and Breakfast accommodation. Prices can vary, and can be expensive. A list of bed and breakfast hotels is available in the local phone book; local libraries will hold copies.
- Sleeping Rough. The individual should try to keep themselves as safe as possible. It may help to keep to well lit areas, and stay around other people sleeping rough. They should carry the minimum number of personal possessions with them, to avoid having them stolen or being assaulted for them. This applies particularly to forms of ID.
- Squatting. Squatting is not a criminal offence, but some of the activities associated with it are, including damaging a property by breaking into it, and using gas and electricity before contacting the suppliers. A person who is squatting is still considered to be homeless by housing agencies, and squatting should not jeopardise a person's application to be housed.

## Useful Websites

[www.shelter.org.uk](http://www.shelter.org.uk)

Masses of useful information including on –line advice

[www.odpm.gov.uk](http://www.odpm.gov.uk)

### **Communities and Local Government**

Click on housing – then homelessness – Direct links to following websites: -

- Shelter
- Homeless pages
- Knowledge News
- YMCA
- Homeless Link
- National Youth Homelessness Scheme (NYHS)

[www.lag.org.uk](http://www.lag.org.uk)

Legal Action Group – works with lawyers and advisers to promote equality of access to justice – includes homelessness.

[www.thesite.org](http://www.thesite.org)

Young person’s advice and information site

[www.youthfax.org](http://www.youthfax.org)

Calderdale Youth Service info site – lots on independent living. Section on housing and homelessness

[www.keychoice.org.uk](http://www.keychoice.org.uk)

Pennine Housing applications and bidding system

[http://www.voiceyp.org/ngen\\_public/default.asp?id=87](http://www.voiceyp.org/ngen_public/default.asp?id=87)

This is the leaving care maze. It helps you find out if a young person is entitled to leaving care services, and what the law says they should get.

<http://www.bradfordccp.com/>

Click on vacancies to see a list of hostel vacancies (Bradford and surrounding area including some for 18 years+) updated

## Useful Websites -continued

<http://www.bradfordfoyer.org/>

Bradford Foyer website

<http://www.hortonhousing.co.uk/>

Info on ypass and other Horton housing projects in Calderdale

<http://www.calderdalesmartmove.org.uk/>

Smartmove

[http://www.foundationhousing.org.uk/customer\\_info.htm](http://www.foundationhousing.org.uk/customer_info.htm)

Foundation Housing

<http://www.homegroup.org.uk>

[www.homeless.org.uk](http://www.homeless.org.uk)

[www.calderdalecab.org.uk](http://www.calderdalecab.org.uk)

Calderdale Citizens Advice Bureau

[www.adviceguide.org.uk](http://www.adviceguide.org.uk)